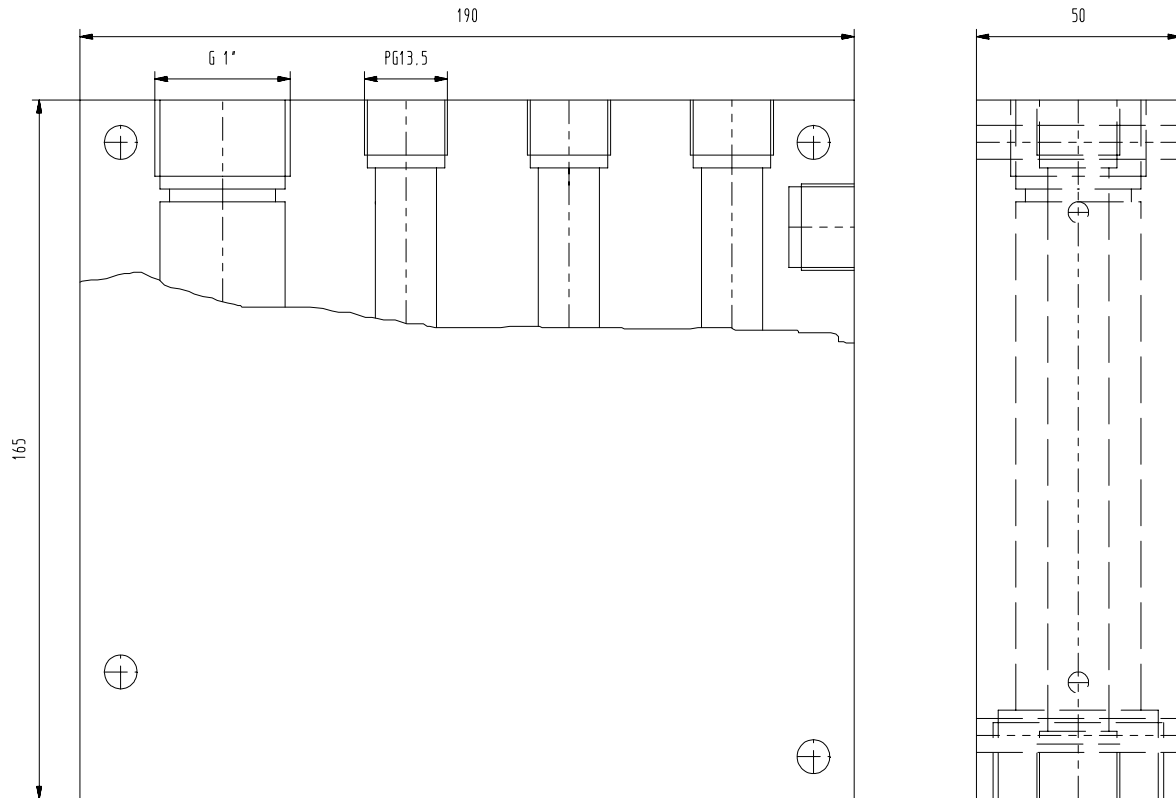


FLOW-THROUGH HOUSING AD 2000

06/04

The flow-through housing AD 2000 consists of a block made of transparent acrylic glass and contains four electrode ports for three electrodes/sensors with PG 13.5 threaded plug head or PG 13.5 hex nut on the shaft and one port for a membrane covered sensor for measurement of the concentration of disinfectants (i.e. chlorine sensor CL 4, CS 2 or CP 2). The housing features compact design, low flow rate and optimal flow conditions for the electrodes/sensors and is the ideal choice for water quality monitoring in swimming pools or drinking water.

As a standard version the compact housing AD 2000 is equipped with a manual mini ball valve and hose connections. Horizontal installation is recommended.



AD 2000 without mini ball valve and hose connections

Dimensions : mm

Specifications

Electrode ports

3 electrode ports PG 13.5 pre-eminently for pH, redox (ORP) combination electrodes and conductivity cells with PG 13.5 thread and standard immersion length 120 mm
1 sensor port 1 " for a membrane covered sensor mounted by means of the mounting set

Material

acrylic glass PMMA

Temperature range

max. 50 °C

Flow rate

about 30 l/h

Pressure

max. 6 bar (pay attention to the pressure limit for the sensors/electrodes)

Process connections

hose connections DN 10 (optional pipe connection)
Horizontal installation recommended

Sensortechnik Meinsberg GmbH

Quality System certified to DIN EN ISO 9001

Fabrikstraße 69

D-04720 Ziegra-Knobelsdorf /GERMANY

Internet: www.meinsberg.de

Tel. +49 34327 623-0

Fax +49 34327 623-79

