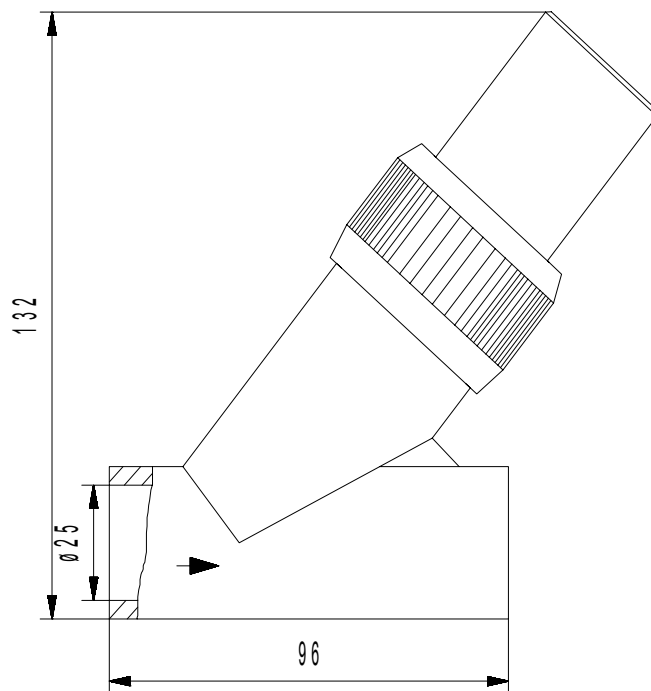


FLOW-THROUGH HOUSING AD 92

06/04



The bevel seat flow-through housing AD 92 made of PVC is used for installation in piping and insertion of an pH or redox electrode, a conductivity cell or an dissolved oxygen probe with PG 13.5 threaded shaft or PG 13.5 threaded plug head, a diameter of 12 mm and an immersion length of 120 mm.

Dimensions : mm

Specifications

Sensor port	1 port with for insertion of a electrode/sensor with thread PG 13.5, diameter 12 mm and immersion length 120 mm
Material	PVC
Temperature range	max. 50 °C
Pressure	up to 20 °C max. 10 bars up to 40 °C max. 5 bars up to 50 °C max. 3.5 bars
Process connections	DN 25 glue port (other pipe ports, flange ports, screw ports or hose ports are available) Mounting pre-eminently in a vertical medium pipe; sensor laterally up to 30° from vertical

Sensortechnik Meinsberg GmbH

Quality System certified to DIN EN ISO 9001

Fabrikstraße 69

D-04720 Ziegra-Knobelsdorf /GERMANY

Internet: www.meinsberg.de

Tel. +49 34327 623-0

Fax +49 34327 623-79

